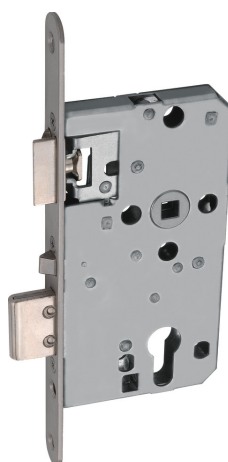


TKZ40 stainless steel for flat entrance doors (DIN R/L 55 20)

Seite 1 von 2



WELL CONSTITUTED

You have to be able to trust a lock. The mortice lock disappears completely into the door and locks automatically.

A safe feeling even when you are not at home. With the TKZ40 mortice lock you can rely on secure locking. After closing, the door is automatically locked. The lock convinces with high wear resistance. After mounting, it is invisible. Another practical feature is the anti-panic function, which allows the mortice lock to be opened from the inside without a key. It is suitable for flat entrance doors with a distance measurement of 72 millimetres.

Technologies

- For standard door cylinders (no free-turning cam needed)
- Latch brass nickel-plated, square bolt malleable iron
- High capacity of resistance by use of high quality materials
- With anti-panic feature (can be opened with the handle from the inside)
- Steel bolt with 21 mm protrusion
- Stainless-steel forend

Operation and use

- For internal doors/apartment doors
- Self-locking when closing the door
- Can be used right and left (forend and latch reversible)
- Forend 20 x 235mm (round)

Variants

TKZ40 stainless steel for flat entrance doors (DIN R/L 55 20)

Seite 2 von 2

-
- Finish: stainless steel
-

Technical data - TKZ40 stainless steel for flat entrance doors (DIN R/L 55 20)

Door type	Apartment door
Security Level Home Security	9
Weight	651 g
colour	stainless steel
EAN	4003318455513