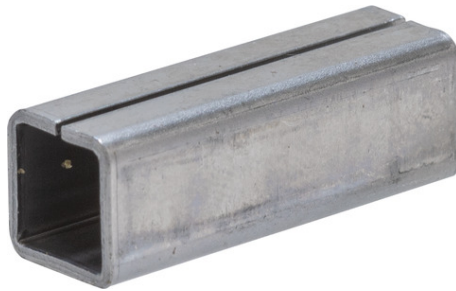


Reducing sleeve 10/9

Seite 1 von 2



LITTLE HELPER FOR YOUR NEW DOOR HANDLE

If you want to install a new handle on the room door, you need a change pin or square bolt.

But sometimes the lock nut and the square bolt don't fit together: A few millimetres separate the parts - the closing mechanism doesn't work or the door handle wobbles. The ABUS reducing sleeve can help in this case.

By sliding the helpful metal part onto the pin, you simply compensate for the missing millimetres. Since the ABUS reducing sleeve is designed to be extra long (30 mm instead of the more typical only 15 mm), this can be done very easily and without any annoying readjustment. You can also choose between three variants: For example, the ABUS reducing sleeve can reduce the size of the lock nut from 9 to 8 mm, from 10 to 8 mm or from 10 to 9 mm. Here's a quick introduction: While the lock nut is 10 mm for front doors, it is 8 mm for common flat doors and 9 mm for fire doors.

Technologies

- Metal reducing sleeves
- extra long, 30 mm

Operation and use

- Serves as compensation between square bolt / change pin

Variants

- Available in 9 mm to 8 mm, 10 mm to 8 mm and 10 mm to 9 mm
-

Reducing sleeve 10/9

Seite 2 von 2

Technical data - Reducing sleeve 10/9

Weight	14 g
colour	silver
EAN	4003318974885