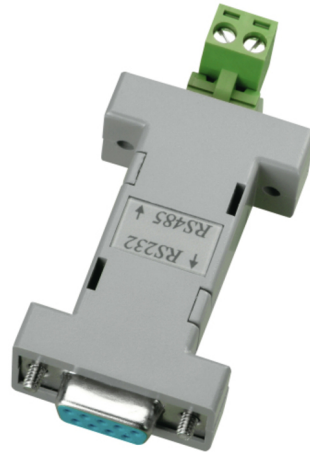


Interface Converter RS-232 To RS-485

Art.-Nr. TV8469

Seite 1 von 1



With the interface converter you can control a PTZ Dome Camera from your PC. The interface converter is connected to the PC by a serial port (RS232), and the dome camera is connected to the interface converter with a 2-core RS485 bus cable. You can operate a total of 31 dome cameras with your PC. One dome camera is connected directly to the converter and the other 30 cameras are connected to each other. The maximum transmission range from the interface converter to the last dome camera is 1200 metres.

Technologies

- Converts RS232-protocol to RS485-protocol, half-duplex
- Connectable to serial COM interface (9-pin)
- Ideal for speed dome camera control
- Simple installation. Plug in. Ready.

Technical data - Interface Converter RS-232 To RS-485

Baud Rate	max. 115200
Communication	half-duplex
Connectible devices	31
Connections	RS-232 / RS-485
Dimensions	(W x H x D) 17 x 33 x 53 mm
Height	33 mm
Length	53 mm
Transmission distance	1.200 m